

**Plumley with Toft and Bexton
Parish Plan**

**Developing a Vibrant Future
for
Our Community**

This Parish Plan has been produced with the support of the Government Office for the North West

CONTENTS

- Introduction
- The Natural Environment
- Business
- Highways
- Policing and Safety
- Transport
- Housing and Accommodation
- Education
- Religion
- Local Facilities
- Parish Council
- Medical facilities
- Recreational Facilities
- Appendix 1 – Parish Plan Action List
- Appendix 2 – Results of Parish Plan questionnaire

ACKNOWLEDGMENTS

Special thanks go to the members of the Working Group and those involved in distributing and collecting the questionnaires, without their contributions this Plan would not have been produced.

The Working Group would like to thank the residents of Plumley, Toft and Bexton and all the members of the community who have, in any way, been involved in the production of this Plan.

The Working Group also wish to thank the Parish Council, Macclesfield Borough Council, Cheshire County Council and Cheshire Community Council for their help and support.

Thanks also go to Gordon Wilkinson, the Cheshire Life Artist, who has very kindly allowed us to use his watercolours of Plumley Station House and Plumley Methodist Church. The picture of the station house was provided courtesy of JPD Group Ltd.

This Parish Plan has been produced with the support of the Government Office for the North West

This plan was adopted by Plumley with Toft and Bexton Parish Council in November 2005.

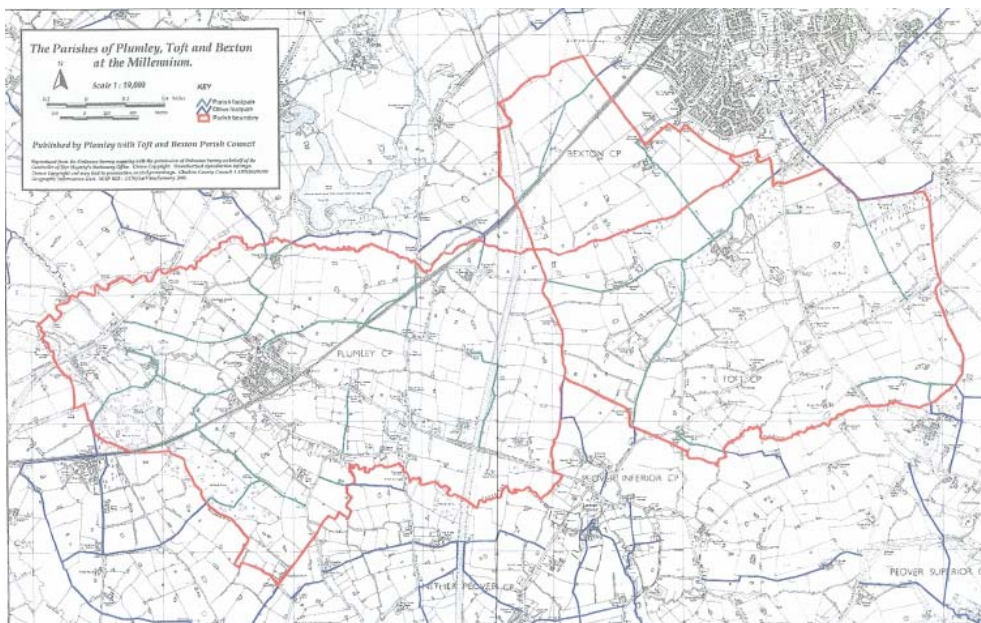
INTRODUCTION

The Government's Rural White Paper "Our Countryside – The Future" introduced the concept of the Parish Plan. It set out the Government's intention to encourage and enable parish councils to take greater responsibility for both running and influencing the future development of their own communities through the creation of a Parish Plan.

A Parish Plan is a comprehensive document, drawn up by the community, which generates a vision of the social, economic and environmental development of the Parish. All the recommendations as to how life in the Parish may be improved and the villages themselves developed are the result of input by the residents (see appendix 1).

In the spring of 2004 Plumley with Toft and Bexton Parish Council held a public meeting to determine the level of support within the Parish for the development of a Parish Plan. As a result of the meeting a panel of parishioners willing to undertake the development of the Plan was formed. The panel was all inclusive and everyone who expressed a wish to be involved in the work has been invited to attend panel meetings. All parishioners have been invited to contribute information for use in the Plan development. A comprehensive questionnaire was delivered to all households within the Parish (320 properties) and a response rate of approximately 50% was achieved. These together with discussions with parish organisations, public meetings and interviews have been used to collect the information used in this report. The questionnaire results are included at appendix 2.

PARISH MAP



LOCATION

The Parish of Plumley with Toft and Bexton is situated in Cheshire in the Borough of Macclesfield. The Parish is bounded between the A556 in the west and the A50 in the east with Northwich 1 mile to the south west and Knutsford adjoining the north east boundary.

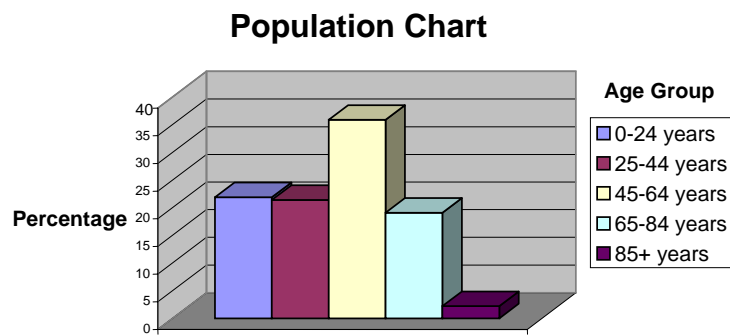
THE PARISH TODAY

Plumley with Toft and Bexton is a very attractive rural parish. The landscape is dominated by fields (for arable & dairy farming), hedges and large numbers of deciduous hedgerow trees with a scattering of small woods across the area. There are two lakes, numerous field ponds and the delightful Peover Eye trout stream within the parish. The land, which is predominantly clay with occasional areas of surface sand, slopes upwards from a height of 23 metres in the extreme west of Plumley to an altitude of 69 metres in the east of Toft. The Parish is home to a wide range of wildlife and a nature reserve near Ascol Drive that has Great Crested Newts, bats, lichens and Liverwort.

The Parish has excellent road links, A50, A556 and M6 and also has a Cheshire Lines railway station linking the area with both Manchester and Chester. The airports of Liverpool and Manchester are easily accessed from the Parish. The majority of residents commute to work in the nearby towns and cities.

There are approximately 45 businesses within the Parish (of which 23 responded to enquiries) ranging from a large office complex to businesses run from home. Agriculture and horticulture are very important to the area; not only are they businesses in their own right but they are to a great extent responsible for creating the attractive landscape that we all enjoy.

POPULATION



The population of Plumley with Toft and Bexton consists of approximately 790 people, comprising 54% female and 46% male with each household having an average occupancy of 2.46 people. The largest percentage (85%+) reside in Plumley. 16% of residents are of school age (including university/college), 61% of working age and 23% of retired age, of which 12% are aged 75 and over.

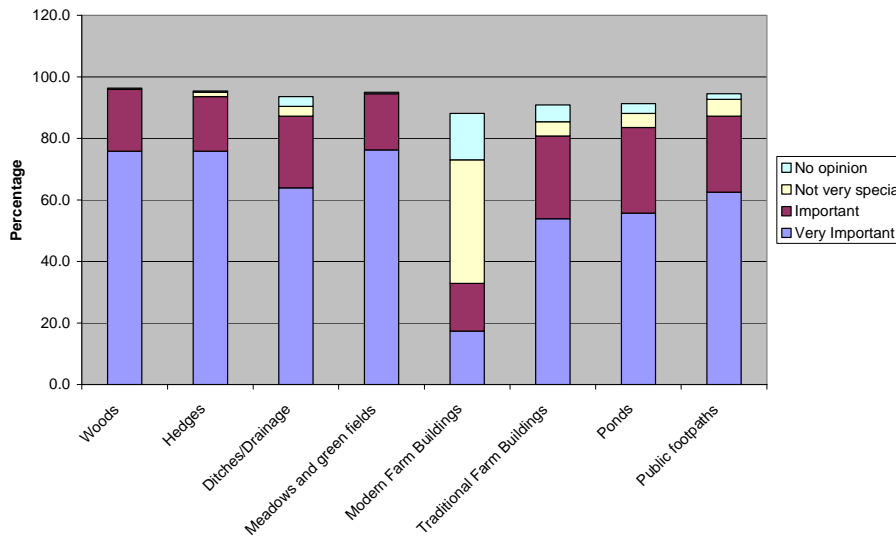
A comprehensive action plan is included at appendix 1. Responsibility for implementing this plan will be that of the “residual body” ie the parishioners involved in developing this plan.

THE NATURAL ENVIRONMENT

The rural environment of the parish is highly valued by the majority of residents with 88% of respondents considering the quality of the countryside around Plumley, Toft and Bexton to be very important.

Woods, hedges and green fields are considered by more than 90% of respondents as either important or very important to the character of the local landscape.

How important are the following features of the surrounding countryside to you?



The Parish has good access to the land through the existing comprehensive network of footpaths and 76.5% of respondents are aware of the location of footpaths. A large percentage of respondents (37.3%) require the standard of footpath signposting to be improved.

There were only 52 respondents who expressed concern for the environment but the wide range of topics mentioned indicates that there is no room for complacency.

The areas of greatest environmental concern are:

- Aircraft noise 13.5%
- Motorway / road noise 7.7%
- Loss of Green Belt 7.7 %
- Pollution of the Peover Eye 7.7 %

ENVIRONMENTAL ACTION LIST

1. Exert strong local control of planning developments to preserve the rural character of the parish and protect the Green Belt.
2. Encourage the maintenance and enhancement of woodlands, hedgerows ponds and green open spaces within the parish.
3. Promote knowledge and improved signage of the local footpath network.
4. Support the local nature reserve.
5. Protect the environment from pollution wherever possible.
6. Encourage local participation in schemes to enhance the environment. The Community Pride competition or litter collection schemes for example.

BUSINESS

The parish has a number of small businesses operating within its boundaries; 30% from distinct business premises and 70% from home. The majority of these businesses (52%) do not provide any employment opportunities and a further 39% employ only 1 to 5 people each; the two larger businesses employ 11 to 20 each. However, these businesses are important to the parish as 41% of them employ people from within the parish.

Unsurprisingly, for a rural parish, the main business activities are farming (39%), garden nurseries and landscaping. The businesses principal customers are predominantly nationwide (52%) and Cheshire based (49%) with a minority (13%) having worldwide reach. This is reflected in the marketing strategy of the businesses with 38% marketing their products/business locally via newspapers and advertising. The remaining promotions are via the internet and e-commerce (19%) and a small percentage of telemarketing. Mail shots, inclusion in programmes for local events and word-of-mouth were low on the marketing agenda. The use of Plumley as a marketing strength was utilised by only 17% of the businesses.

Local facilities such as transport, the local authority and community organisations were generally considered as not important to the operation and future of the businesses, however 30% and 13% respectively considered the Post Office and Local Authority to be essential. Only 13% of the businesses had made use of rural grants.

In answer to the question *“How could Plumley with Toft and Bexton help you to expand?”* 13% of businesses would like to see the community promote support for local businesses. Other suggestions were publication of the range of businesses in the area, do more of what you do now and a better return on agricultural produce.

Whilst it is not within the scope of this report to produce a better return on agricultural produce, it was felt that the suggestions to promote support for local businesses and publicise the range of businesses should be actioned.

BUSINESS ACTION LIST

1. Promote support for local businesses.
2. Publicise the range of businesses in the Parish.

HIGHWAYS

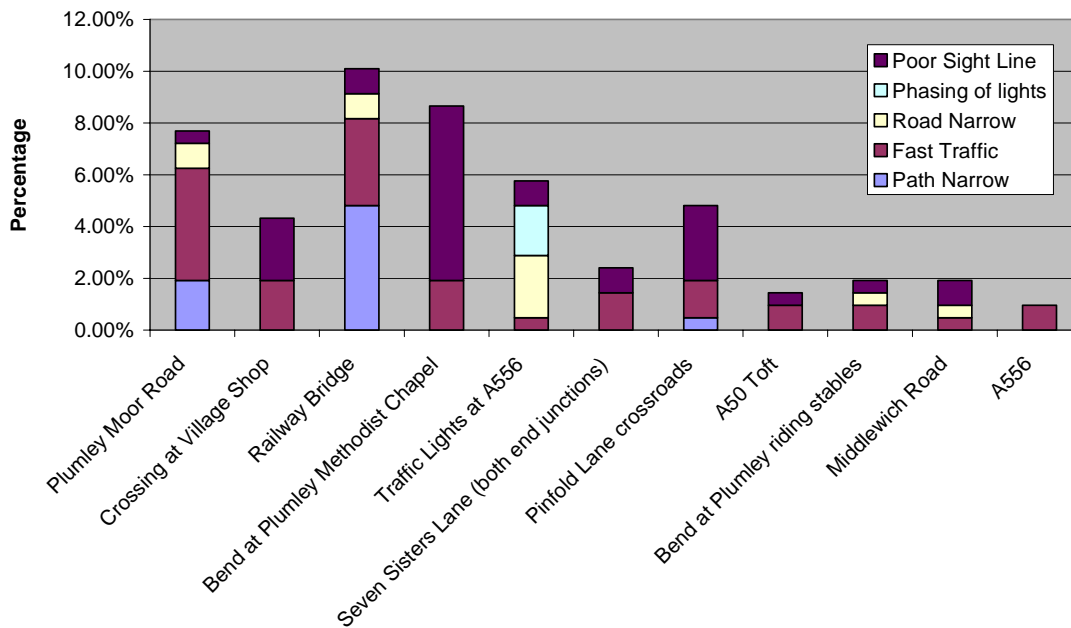
ROADWAYS

Despite the fact that significant improvements have been made to road safety, for example the installation of the traffic lights at The Smoker, residents still have concerns about highway safety. Residents perceive that the volume of traffic using the roads throughout the Parish has increased over the years and feel that a much higher percentage of heavy goods vehicles use Plumley Moor Road. The associated dangers are reflected in the concerns of the respondents.

A large number of respondents (86%) thought that there were ‘dangers spots’ on the roads within Plumley, Toft and Bexton, excessive speed being a major concern, and there is a high degree of approval for the following traffic management measures to be implemented:

- a lower speed limit (78%)
- traffic calming (50%)
- a pedestrian crossing (50%) and children crossing signs (47%) at Plumley Village Shop
- more road warning signs (32%); and
- an extension of the speed limit along the length of Plumley Moor Road (27%).

Danger Spots



Roads throughout the Parish are narrow in parts; major concerns were expressed with regard to poor 'lines of sight' that are prevalent throughout Plumley, Toft and Bexton especially the bends at the junction of Plumley Moor Road and Trouthall Lane and the Plumley Riding Stables, the cross roads at Pinfold Lane/Back Lane and Plumley Moor Road and the exits from Malt Kiln on to Plumley Moor Road and from Toft Church on to the A50.

The railway bridge at Plumley station is of major concern due to the narrowness of the carriageway and pavement. Residents thought that some form of priority usage of the roadway should be implemented with traffic measures at each side of the bridge, which would then also allow a wider pavement. A wider pavement is critical, especially for the disabled or parents with children in buggies, since access to the platforms on the railway station necessitates walking over the bridge.

School buses and coaches for other excursions use the section of Plumley Moor Road adjacent to the village shop as a pick up and drop off point (this section of roadway is near a bend with poor 'lines of sight'); the village shop has a high number of elderly customers throughout the day; a pedestrian crossing, at this section, would facilitate, in particular, the elderly and school children and help to avert potentially fatal accidents.

The small number of residents in Toft and Ascol Drive result in a low but nevertheless significant percentage of respondents indicating concern with regard to roads in Toft and

at Ascol Drive. It is felt that the small number of residents with concerns should not preclude these areas being taken into consideration. Concerns have been expressed with regard to speed and poor 'lines of sight' at junctions on to the A50 in Toft and speed at the junction between Ascol Drive and the A556.

PAVEMENTS

The increase in vehicular usage of roads throughout Plumley, Toft and Bexton has increased the associated dangers for pedestrians. Whilst 54% of respondents considered pavements to be reasonable or better, 92% of respondents with special needs considered pavements unsuitable and 31% of respondents thought more pavements were required. Disabled respondents and parents with young children regarded pavements as too narrow for wheelchair or buggy access and also requested dropped kerbs at crossing points. The request for more footpaths (33%) should probably be read as more pavements since, in most cases, the respondents did not distinguish between a footpath and a pavement.

The area of greatest concern is walking along Plumley Moor Road, when walking between the village shop and the Golden Pheasant. A narrow pavement exists on the west side of Plumley Moor Road from Trouthall Lane to the station bridge and a narrow pavement exists on the east side of Plumley Moor Road from one side of the bridge to the other side. This necessitates crossing Plumley Moor Road at a point with very poor 'lines of sight' and if walking to the Golden Pheasant Inn a further crossing of Plumley Moor Road on the other side of the bridge at a point with equally poor 'lines of sight' and no pavement on the west side. Furthermore, no pavement exists beyond the end of the speed limit up to Pinfold Lane.

CYCLE PATHS

Many of the roads in the Parish are frequently used by cyclists for leisure and sport, particularly at the weekends. The danger associated with the use of bicycles on the roads throughout the parish is increased because of the speed and volume of traffic combined with narrow roads. A large percentage of respondents (26%) requested the introduction of cycle paths throughout the parish.

LIGHTING

Street lighting is of concern to a large number of respondents with 26% requesting more lighting and 30% requesting environmentally sensitive lighting throughout the parish. This

issue was also highlighted in the Policing and Safety survey where 30% of respondents requested improved street lighting for security purposes. The main areas of concern are Plumley Moor Road, Yew Tree Road area, Trouthall Lane and Moorcroft.

OTHER AREAS OF CONCERN

Disabled respondents raised concerns of access to premises and cars parked on pavements.

Respondents to a question regarding anti-social behaviour (see Policing and Safety) highlighted inconsiderate parking (35%) as a major nuisance. This is an issue which is exacerbated by the increase in vehicle ownership and a lack of adequate parking facilities at private residences and at public venues within the parish (see Local Facilities).

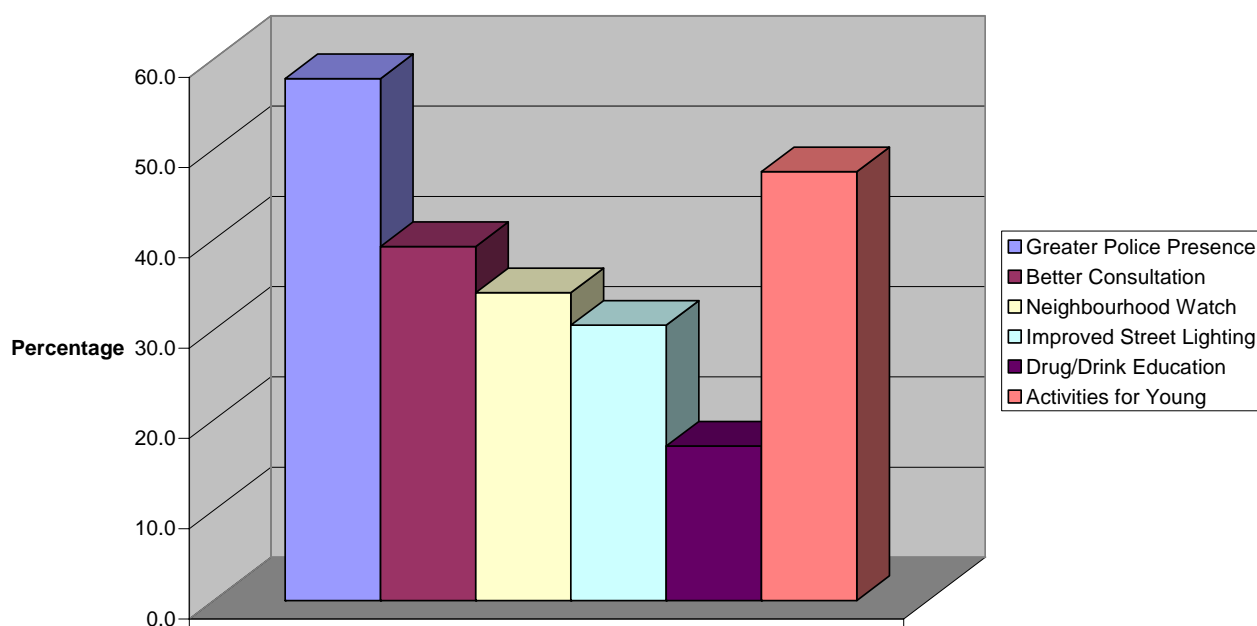
HIGHWAYS ACTION LIST

1. Reduce existing speed limit on Plumley Moor Road to 30 mph.
2. Introduce a 40mph speed limit along the remainder of Plumley Moor Road.
3. Introduce traffic calming measures on the railway station bridge in Plumley by introducing priority usage of the roadway over the railway bridge at Plumley.
4. Introduce width and weight restrictions on Plumley Moor Road.
5. Maintain and improve pedestrian facilities on Plumley Moor Road, between The Golden Pheasant and the village shop.
6. Install a pedestrian crossing on Plumley Moor Road adjacent to the village shop.
7. Improve 'lines of sight' on road bends and junctions at key points.
8. Install dropped kerbs at likely crossing points along Plumley Moor Road.
9. Improve existing and provide new environmentally sensitive street lighting on Plumley Moor Road, Yew Tree Road area, Trouthall Lane and Moorcroft.

POLICING & SAFETY

Police coverage of the Parish of Plumley with Toft and Bexton is seen as poor with only 4% of respondents regarding it as good and 26% regarding it as reasonable. This, together with the call for a greater police presence (58%), better consultation between police and local people (39%) and crime and anti-social behaviour in the parish (85%), suggests that a radical rethink of the way in which police manpower is utilised within the parish is required. The main areas of concern are theft (62%) and vandalism (44%).

It was felt that more activities for young people (47%), a neighbourhood watch scheme (34%), improved street lighting (30%) and more drug/drink education/prevention (17%) would lead to further improvements.



In order to address the above issues the continuity of a police presence throughout the parish must be improved. Simply increasing the amount of time that the police patrol the parish is insufficient and probably unrealistic given current manpower resources. Bringing back the local law enforcement representative and re-establishing continuity within the local community would address these concerns.

Currently local policing is provided from Knutsford Police Station and the personnel assigned to the parish are often young and ambitious and subject to frequent change, thus

giving poor continuity. The provision of a local point of reference, with either the part time employment of retired/semi retired (local) policemen, training retired individuals as community officers, employment of special constables or a parish warden would provide continuity and a familiar interface between the local community and the police. This would answer three of the main problem areas: a greater law enforcement presence, better consultation, and the integration of home watch into a neighbourhood watch scheme. It would also provide a first point of contact and advice on the major concerns to respondents and would improve police response to minor issues.

It is noted that respondents linked the lack of adequate facilities for young people to anti-social behaviour and the provision of more activities for young people is dealt with in the section on 'Local Facilities'. Advice should be obtained on the most appropriate methods of imparting drug and drink education but is probably best provided within the scope, and as an integral part, of facilities for young people.

POLICING & SAFETY ACTION LIST

1. Establish continuity of police or warden presence by employing (local) part time officers.
2. Provide facilities for young people (see section on Local Facilities).
3. Obtain advice on and provide drug/drink education within the scope of facilities for young people.
4. Develop parking facilities at critical areas within the parish (see section on 'Highways').
5. Improve street lighting in critical areas (see section on 'Highways').
6. Improve surveillance on railway station.

TRANSPORT

The majority of respondents own at least one car; 41% of households had two cars and 33% had one car. With regards to bicycles, over half of households did not own a bicycle (62%). However 8% of households owned one bicycle, and 30% owned at least two bicycles. The majority of households stated that they did not own a motorcycle (94%). The survey has revealed that some seventeen households (11%) have no car and a further 33% only have access to one car. It is likely that there will be total reliance on public transport to reach key destinations such as Knutsford and Northwich.

Respondents (73%) use a car as their main means of transport to and from work and 81% as their main means of transport for all journeys. Respondents (70%) stated that they never had any difficulty in travelling from Plumley, Toft or Bexton to other places. Train and bus transportation accounts for only 5% and 3% (principally used by school children) respectively in travelling to and from work and 9% and 4% respectively for all journeys.

The low overall level of bus use reflects the limited bus provision in Plumley, Toft and Bexton. Whilst 35% of respondents stated that the reliability of train services needed to be improved and also cited the need for improvements in service (28%), timetable (24%) and cost (23%); the Mid Cheshire Railways Users Association state that significant improvements have already been made since the Northern Train Company took over the franchise for services on the Chester line; reliability is now 98.4% (target 99%) and punctuality 87.4% (target 91%).

The survey has revealed that Plumley benefits from the existing rail links serving the village; the rail station provides a lifeline to the village by providing the most viable travel choice to Northwich, Knutsford and beyond for those people without access to a car. It is particularly important that rail services are maintained to the highest standards, to ensure that the village continues to benefit from access to facilities in Northwich and Knutsford. It would be useful to consider the scope to improve facilities at the rail station, to ensure that it is an attractive travel option for the village.

The most common destinations, when making a journey, were Knutsford (23%) and Northwich (23%) with, in order of priority, shopping, leisure, work and health being the main reasons. This reflects the immediate proximity of Northwich and Knutsford as the nearest towns, but also reflects the access options that are available by car and train. The analysis has shown that similar numbers of journeys are made for shopping, leisure and

travel to work. It is therefore important not to neglect the needs of travel outside the weekday peak periods, as residents have a wide range of travel needs.

When asked to provide details of journeys they would like to make, respondents cited Knutsford and Macclesfield as the main destinations with health as the main reason for the journey. The lack of a car, or suitable bus or train service and disabilities were given as the reasons for not being able to make these journeys, notably to Macclesfield which does not have viable or attractive public transport links.

An average of 12% of respondents said that they would be willing to take part in a scheme to share private vehicles for journeys on an occasional basis and only 2% on a regular basis; 63% stated that they would never car share.

The recent introduction of the 'Taxi Rider' scheme in the Plumley, Toft and Bexton area (a system of shared usage of taxis for journeys to local places) has been received favourably and there is also a high awareness of this scheme (72% of respondents).

Taxis accounted for only 1% of all journeys prior to the introduction of this scheme. Amber cars, the operators of the scheme, have vehicles equipped for the disabled; this could be an ideal method of plugging the gap in transportation requirements particularly if its range were extended to include Macclesfield Hospital.

A small percentage of children are unable to take part in after-school activities primarily due to lack of transport. It is possible that the use of the 'Taxi Rider' scheme, sponsored by the schools in question, would provide a solution to this problem.

TRANSPORT ACTION LIST

1. Lobby Macclesfield Borough Council to extend the range of the 'Taxi Rider' scheme to include travel to and from Macclesfield Hospital. Evidence can be provided for this demand through the Transport Needs Assessment carried out in 2005.
2. Investigate the possible use of the 'Taxi Rider' scheme for transport following after school activities.
3. Make representations to the train operators to maintain a high level of reliability and punctuality.
4. Consider the scope to improve facilities at the rail station.

HOUSING AND ACCOMMODATION

EXISTING

The Parish of Plumley with Toft and Bexton contains a wide variety of different types of dwellings including farms, cottages, bungalows, 1930's houses, detached, semi-detached, and terraced houses and barn-conversions.

A large percentage (66%) of the respondents to the Parish Plan questionnaire live in detached properties with 41.5% living in detached houses and 24.5% living in bungalows. A significant proportion of the population live in semi-detached dwellings (18.2%) and terraced houses (13.2%). Only one respondent replied that their dwelling was specially adapted although 13.6% of respondents replied that a member of their household has a disability.

Of the many types of dwellings described the majority (81.1%) are owner-occupied. A small percentage (16.3%) of the properties in Plumley with Toft and Bexton are rented; 6.9% privately and 9.4% by the local authority.

HOUSING DEVELOPMENT

Although respondents to the questionnaire already live in the parish, they were asked their opinion on what type of future development, if any, would be acceptable. Whilst a quarter of the respondents would prefer no future development, 50% consider the conversion of redundant buildings to be acceptable. Small-scale development was acceptable to 28% of respondents who would find group(s) of less than 10 houses acceptable. In contrast only 4% felt that larger groups of houses were acceptable, on the understanding that they were carefully designed and in keeping with the surroundings that households value highly.

Significant numbers of houses within the parish have been modernised and enlarged resulting in a shortage of homes for young people. An important consideration for any future development was that it should include affordable dwellings; this was voiced by 37% of respondents.

In order to ensure that all interests are taken into consideration it should be noted that 26% of respondents would not accept any type of housing development and therefore the environmental and socio-economic impact would need to be assessed and opposition assuaged prior to any major development.

HOUSING & ACCOMMODATION ACTION LIST

1. Ensure the views of parishioners are taken into consideration in any future housing development plans.
2. To ensure that the Parish Plan is incorporated into the Borough Council's planning documents.

EDUCATION

A total of 66 people considered that adult education evening classes were required in Plumley, Toft and Bexton; 67 people expressed an interest in vocational training of which 32 respondents (48%) would like information technology and computing, 15 respondents (22%) would be interested in skilled/craft related training and 10 respondents (15%) in professional/managerial courses. Evening classes, as opposed to mornings or afternoons, would be preferred by 79% of respondents. The number of respondents who stated an interest in other areas of education was limited. Information technology evening classes are already being held at the hall on a weekly basis.

The other main area of education that was of interest to respondents was the provision of various types of learning/play groups for children, including the following:

| | | |
|---------------------|----|---------|
| Holiday play scheme | 44 | (36.4%) |
| After school clubs | 33 | (27.3%) |
| Playgroup | 28 | (23.1%) |
| Nursery School | 25 | (20.7%) |

It should be noted that a toddler group (Mums & Tots) meets at Plumley Village Hall on Tuesday mornings during school term time. The provision of nursery education can only reasonably be accomplished if space and resources are found at a local primary school, i.e. Lower Peover and Bexton Lane

EDUCATION ACTION LIST

1. Investigate the possibility of introducing adult evening classes for skilled/craft related training and professional/managerial courses along with the IT classes.
2. Investigate the possibility of introducing a holiday play scheme, an after school club and a playgroup for young children.

RELIGION

A total of 294 people (75% of all respondents) answered the questions concerning religion; of these 37% attend Plumley Methodist Church, Lower Peover, or Toft Parish churches; a further 9% attend elsewhere and 1% had problems getting to the church. In all 47% attend or would attend worship and 14% are of other denominations.

Of the remaining 39%, 13% expressed no interest and 2% that the church was unwelcoming.

LOCAL FACILITIES

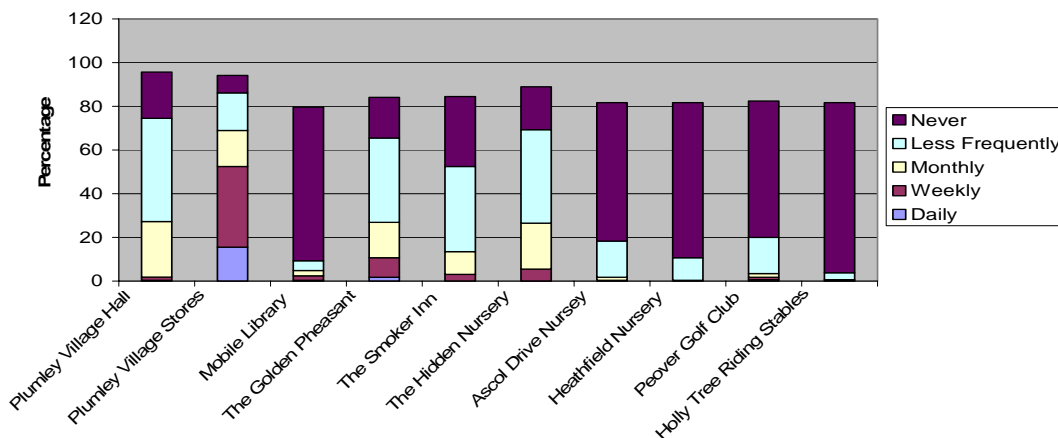
Plumley Village Hall is at the heart of Plumley Village and there are a number of other well established local facilities within the Parish. These include:

- Plumley Methodist Chapel and School Room
- Toft Church and Church Hall
- Plumley Village Stores and Post Office
- The Golden Pheasant Public House
- The Smoker Public House
- The Hidden Nursery
- Ascol Drive Nursery
- Heathfield Nursery
- Peover Golf Club
- Holly Tree Riding Stables
- Mobile library

Plumley Village Hall acts as a focal point in the village being the venue for most recreational and social activities (see section on Recreational Facilities) and is used by 25% of respondents each week and 47% less frequently. The upkeep and maintenance is funded by hiring and fund raising activities, and the hall is managed by a voluntary management committee; additional funds for improvements are obtained, when and where possible, via grants. The Village Hall is used most days of the week and whilst efforts are ongoing to increase the level of usage the continual short fall in funding by hire and consequent reliance on fund raising places a strain on the management committee. As a community resource the continued existence of the hall should be considered a priority by Macclesfield Borough Council and assistance by way of guaranteed funding should be instituted.

From discussions with residents, the parking at public venues particularly the village hall, Plumley Village Stores and the chapel are considered inadequate.

How often do you use the following shops and services?



Plumley Village Stores is used daily by 16% of respondents, weekly by 37% and only 8% said they never used it, which demonstrates its importance within the Parish. Parishioners appreciate the convenience of the local shop and also like to support it where possible.

Whilst one would expect the majority of Parishioners to use the Post Office for general postal services, the ability to draw pensions/allowances, pay bills and undertake banking activities are valued by a significant number.

Whilst the Golf Club and Riding Stables are well utilised the above results suggest that their users do not generally reside within the Parish.

Respondents (89%) rely on the Plumley Newsletter to obtain information about forthcoming events; 40% also use the Knutsford Guardian; 30% the Village Hall notice board; 28% church magazines and 19% the Parish notice boards. Once again the continued existence of a highly valued community resource, the Plumley Newsletter, relies on funding from the Village Hall committee and donations.

LOCAL FACILITIES ACTION LIST

1. Attempt to obtain funding from Macclesfield Borough Council and other funding bodies for the Village Hall.
2. Explore options for additional parking at public venues.

PARISH COUNCIL

The Parish Council is concerned to reflect the views of all parishioners; a total of 81 people stated that they had attended a meeting of the Parish Council. In answer to questions, regarding Parish Council meetings, 54% of respondents thought that the issues discussed reflected local concerns and 18% thought that they did not; 47% of respondents considered that the Parish Council publicised its decisions and activities very well or reasonably well, however 30% stated that this was done badly and of these 14 (25%) reside in Toft. It should be recognised that the Parish Council has eleven seats, nine being in Plumley and the remaining two in Toft and Bexton.

The reason for this poor opinion, especially in Toft, may be that, within Plumley, the Plumley Village Newsletter is distributed containing a report on the council meetings and actions. Extending the coverage of this newsletter with contributions from Toft and Bexton may meet the need to inform all parishioners of council decisions and actions.

PARISH COUNCIL ACTION LIST

1. Investigate methods of disseminating information more effectively, and ensuring that coverage is extended to Toft and Bexton.

MEDICAL FACILITIES

A total of 79 people responded to the question on the need for local medical services and 30 people stated that a member of the household had disabilities. The services required were as follows:

| | | |
|--|----|---------|
| Chiropody | 62 | (78.5%) |
| Physiotherapy | 44 | (55.7%) |
| Optician | 25 | (31.6%) |
| Counselling services | 13 | (16.5%) |
| Dentist | 2 | (2.5%) |
| Doctor | 2 | (2.5%) |
| Cover for helpers (especially at weekends) | 1 | (1.3%) |
| Health Centre for young people | 1 | (1.3%) |

There is a clear need for some of the above services, especially chiropody, physiotherapy and counselling, which can be provided in the home. The provisions of an optician's or dental services are precluded because of the quantity and lack of portability of equipment required, however the issue of transport availability should be addressed (see Transport section). Doctors are available for house calls, where necessary, at anytime of the day or night and respite cover for 'helpers' is available from the Local Authority.

MEDICAL FACILITIES ACTION LIST

1. Investigate the local provision of chiropody, physiotherapy and counselling services.
2. Disseminate information on Local Authority services and emergency cover for doctors' surgeries.
3. Disseminate information on respite care.

RECREATIONAL FACILITIES

The replies to the questionnaire showed that 95% of respondents were aware of the bowling green at the Golden Pheasant and the tennis courts at Plumley Village Hall. However only 52% knew that there is a toddler play area in the village; located on Moorcroft and maintained by Macclesfield Borough Council. Within the last few years a low

fence has been put around it for safety reasons and some new equipment installed. Residents should note that it is available for use by all toddlers in village.

It was felt by 50% of respondents that children and young people were not well catered for in respect of local social facilities whereas 59% considered that facilities for older ages were reasonable or good.

In thinking of future facilities, 42% of respondents would be interested in various sports which could be provided in a single multi-sports facility. This, together with a call for improved tennis facilities, could be a catalyst for redesigning and improving the existing tennis courts at Plumley Village Hall, creating an outdoor multi-sport area and thus increasing usage on a year round basis.

The existence of Plumley Celtic Football Club is known by 60% of respondents and 72% thought that we should try to obtain a village playing field, which could be utilised for a number of field sports. Physical activity is essential for good health and only 40% of the general population is physically active, a village playing field or other new recreational facility would help to promote physical activity for all age groups.

A monthly youth fellowship has been well attended since formation; all young people are welcome to join in at meetings held at Plumley Methodist Chapel.

Respondents stated that they would attend the following clubs and activities if they were provided:

| | | |
|----------------------------|----|---------|
| Gardening Club | 52 | (38.0%) |
| Rambling Club | 42 | (30.7%) |
| Dancing | 41 | (29.9%) |
| Art Club | 29 | (21.2%) |
| Senior Citizens Group | 10 | (7.3%) |
| Creative arts for children | 28 | (20.4%) |
| Young people's drama group | 24 | (17.5%) |
| Tennis Club | 11 | (8.0%) |

And the following number of respondents stated that they would be willing help to organise or manage these activities:

| | | |
|----------------------------|---|---------|
| Senior Citizens Group | 1 | (4.3%) |
| Gardening Club | 8 | (34.8%) |
| Rambling Club | 7 | (30.4%) |
| Art Club | 0 | (0.0%) |
| Young people's drama group | 6 | (26.1%) |
| Creative arts for children | 6 | (26.1%) |
| Dancing | 6 | (26.1%) |
| Tennis Club | 1 | (4.3%) |

Given the large number of potential participants and willing organisers it should be possible to arrange most, if not all, of the above activities and Plumley Village Hall or Toft Church Hall would be the most appropriate venues.

It should be noted that the Friendship Club, a senior citizens group, meets at Plumley Village Hall on the second and fourth Thursdays of each month (contact: Janice Gray 01565 722881) and Mums and Tots, a pre-school group, meets at the same venue on Tuesday mornings during school term time; Probus Club, a retired business club, meets at the Golden Pheasant. The village also boasts the Halle Group, Ladies' Guild, Bowling Club and the Women's Institute; yoga classes are held on Wednesday nights at Plumley Village Hall.

RECREATIONAL FACILITIES ACTION LIST

1. Investigate funding for and reshape the existing tennis courts at Plumley Village Hall into an outdoor multi-sport playing area.
2. Investigate funding for and the possible location of a playing field.
3. Encourage willing organisers to start-up the following activities:
 - a. Gardening Club
 - b. Rambling Club
 - c. Young people's drama group
 - d. Creative arts for children
 - e. Dancing
 - f. Tennis Club
 - g. Senior Citizens Group

h. Art Club

4. Call on volunteers to organise a youth club.

Appendix – 1

Parish Plan Action Plan

ACTION PLAN

| ENVIRONMENTAL | |
|------------------------------|--|
| 1 | Exert strong local control of planning developments to preserve the rural character of the parish and protect the Green Belt. |
| 2 | Encourage the maintenance and enhancement of woodlands, hedgerows ponds and green open spaces within the parish. |
| 3 | Promote knowledge and improved signage of the local footpath network. |
| 4 | Support the local nature reserve. |
| 5 | Protect the environment from pollution wherever possible. |
| 6 | Encourage local participation in schemes to enhance the environment. The Community Pride competition or litter collection schemes for example. |
| BUSINESS | |
| 7 | Promote support for local businesses. |
| 8 | Publicise the range of businesses in the Parish. |
| HIGHWAYS | |
| 9 | Reduce existing speed limit on Plumley Moor Road to 30 mph |
| 10 | Introduce a 40mph speed limit along the remainder of Plumley Moor Road. |
| 11 | Introduce traffic calming measures on the railway station bridge in Plumley by introducing priority usage of the roadway over the railway bridge at Plumley. |
| 12 | Introduce width and weight restrictions on Plumley Moor Road. |
| 13 | Maintain and improve pedestrian facilities on Plumley Moor Road, between The Golden Pheasant and the village shop. |
| 14 | Install a pedestrian crossing on Plumley Moor Road adjacent to the village shop. |
| 15 | Improve 'lines of sight' on road bends and junctions at key points. |
| 16 | Install dropped kerbs at likely crossing points along Plumley Moor Road. |
| 17 | Improve existing and provide new environmentally sensitive street lighting on Plumley Moor Road, Yew Tree Road area, Truthall Lane and Moorcroft. |
| POLICING & SAFETY | |
| 18 | Establish continuity of police or warden presence by employing (local) part time officers. |
| 19 | Provide facilities for young people (see section on Local Facilities). |
| 20 | Obtain advice on and provide drug/drink education within the scope of facilities for young people. |
| 21 | Develop parking facilities at critical areas within the parish (see section on 'Highways'). |
| 22 | Improve street lighting in critical areas (see section on 'Highways'). |
| 23 | Improve surveillance on railway station. |

| | |
|----|---|
| | TRANSPORT |
| 24 | Lobby Macclesfield Borough Council to extend the range of the 'Taxi Rider' scheme to include travel to and from Macclesfield Hospital. Evidence can be provided for this demand through the Transport Needs Assessment carried out in 2005. |
| 25 | Investigate the possible use of the 'Taxi Rider' scheme for transport following after school activities. |
| 26 | Make representations to the train operators to maintain a high level of reliability and punctuality. |
| 27 | Consider the scope to improve facilities at the rail station. |
| | HOUSING & ACCOMODATION |
| 28 | Ensure the views of parishioners are taken into consideration in any future housing development plans. |
| 29 | To ensure that the Parish Plan is incorporated into the Borough Council's planning documents. |
| | EDUCATION |
| 30 | Investigate the possibility of introducing adult evening classes for skilled/craft related training and professional/managerial courses along with the IT classes. |
| 31 | Investigate the possibility of introducing a holiday play scheme, an after school club and a playgroup for young children. |
| | LOCAL FACILITIES |
| 32 | Attempt to obtain funding from Macclesfield Borough Council and other funding bodies for the Village Hall. |
| 33 | Explore options for additional parking at public venues. |
| | PARISH COUNCIL |
| 34 | Investigate methods of disseminating information more effectively, and ensuring that coverage is extended to Toft and Bexton. |
| | MEDICAL FACILITIES |
| 35 | Investigate the local provision of chiropody, physiotherapy and counselling services. |
| 36 | Disseminate information on Local Authority services and emergency cover for doctors' surgeries. |
| 37 | Disseminate information on respite care. |
| | RECREATIONAL FACILITIES |
| 38 | Investigate funding for and reshape the existing tennis courts at Plumley Village Hall into an outdoor multi-sport playing area. Investigate funding for and the possible location of a playing field. |
| 39 | Encourage willing organisers to start-up the following activities: <ul style="list-style-type: none"> • Gardening Club • Rambling Club • Young people's drama group |

| | |
|----|---|
| | <ul style="list-style-type: none">• Creative arts for children• Dancing• Tennis Club• Senior Citizens Group• Art Club |
| 40 | Call on volunteers to organise a youth club. |

Appendix – 2

Parish Plan Questionnaire Results

Plumley with Toft and Bexton Parish Plan Questionnaire

INDIVIDUAL QUESTION COUNTS

HOUSEHOLD SECTION

NUMBER OF HOUSEHOLDS: 159

Question Number: 1

How many people including children normally live in your household? 393 (Ave 2.46)

Question Number: 2

Please enter the number of people in your household in each age group:

| Age | Male | Female |
|-------|------|--------|
| 0-4 | 8 | 8 |
| 5-10 | 13 | 4 |
| 11-15 | 12 | 18 |
| 16-17 | 3 | 5 |
| 18-24 | 13 | 14 |
| 25-44 | 40 | 42 |
| 45-59 | 55 | 53 |
| 60-64 | 13 | 13 |
| 65-74 | 18 | 20 |
| 75-84 | 16 | 17 |
| 85+ | 2 | 6 |

Question Number: 3

Is this residential or business premises or both?

| | | |
|--|-----|----------|
| Residential premises | 137 | (85.6 %) |
| Business premises | 3 | (1.9 %) |
| Both a residential and business premises | 20 | (12.5 %) |

Question Number: 4

Where does your household live?

| | | |
|---------|-----|----------|
| Plumley | 142 | (89.3 %) |
| Toft | 17 | (10.7 %) |
| Bexton | 0 | (0.0 %) |

Question Number: 5

Is this dwelling?

| | | |
|---|-----|----------|
| Private rented | 11 | (6.9 %) |
| Local authority rented | 15 | (9.4 %) |
| Housing Association rented | 0 | (0.0 %) |
| Owner occupied | 129 | (81.1 %) |
| Shared ownership (part owned/part rented) | 1 | (0.6 %) |
| Provided as part of employment (e.g. MOD) | 2 | (1.3 %) |
| Other | 1 | (0.6 %) |

Question Number: 6

What type of dwelling is this?

| | | |
|---------------------------|----|----------|
| Detached house | 66 | (41.5 %) |
| Semi-detached house | 29 | (18.2 %) |
| Terraced house | 21 | (13.2 %) |
| Bungalow | 39 | (24.5 %) |
| Specially adapted housing | 1 | (0.6 %) |
| Other | 2 | (1.3 %) |

Question Number: 7

Enter the number of children under 16 in your household who attend the following:

| | |
|-------------------------------------|----|
| Pre school | 9 |
| Private nursery | 7 |
| School for those with special needs | 1 |
| Other | 24 |

Question Number: 8

If any of your children under 16 are unable to take part in after school activities, please give the reasons why:

| | | |
|-------------------------------|----|---------|
| Lack of transport home | 10 | (6.3 %) |
| Distance between home/school | 6 | (3.8 %) |
| Expense | 1 | (0.6 %) |
| Special needs not catered for | 1 | (0.6 %) |

PERSONAL SECTION**Question Number: 9****NUMBER OF RESPONDENTS TO QUESTION: 342**

Please indicate the sex of each person in your household.

| | | |
|--------|-----|---------|
| Male | 158 | (46.2%) |
| Female | 184 | (53.8%) |

Question Number: 10**NUMBER OF RESPONDENTS TO QUESTION: 341**

What age group do you belong to?

| | | |
|-------|-----|---------|
| Age | | |
| 11-15 | 26 | (7.6%) |
| 16-17 | 5 | (1.5%) |
| 18-24 | 23 | (6.7%) |
| 25-44 | 74 | (21.7%) |
| 45-59 | 107 | (31.4%) |
| 60-64 | 27 | (7.9%) |
| 65-74 | 39 | (11.4%) |
| 75-84 | 31 | (9.1%) |
| 85+ | 9 | (2.6%) |

Question Number: 11**NUMBER OF RESPONDENTS TO QUESTION: 9**

If you are actively seeking work, are there any barriers that are preventing you from taking up employment, training or study opportunities?

| | | |
|--|---|---------|
| Lack of alternative care for adult dependent | 1 | (11.1%) |
| Lack of child care locally | 0 | (0.0%) |
| Cost of child care locally | 1 | (11.1%) |
| Lack of access to transport | 0 | (0.0%) |
| I don't have the right type of qualifications/training | 2 | (22.2%) |
| Disability or ill health of some kind | 2 | (22.2%) |
| Lack of information/advice | 3 | (33.3%) |
| Other | 1 | (11.1%) |

Question Number: 12 **NUMBER OF RESPONDENTS TO QUESTION: 258**

What is, or would be, your main means of transport to work, training or study?

| | | |
|---------------------------|-----|---------|
| Car | 188 | (72.9%) |
| Train | 14 | (5.4%) |
| Bus | 8 | (3.1%) |
| Motor-cycle/Scooter/Moped | 4 | (1.6%) |
| Bicycle | 4 | (1.6%) |
| Taxi | 0 | (0.0%) |
| Other | 7 | (2.7%) |
| Not applicable | 33 | (12.8%) |

Question Number: 13 **NUMBER OF RESPONDENTS TO QUESTION: 68**

Do you work from home?

| | | |
|-----|----|---------|
| Yes | 8 | (11.8%) |
| No | 60 | (88.2%) |

Question Number: 14 **NUMBER OF RESPONDENTS TO QUESTION: 67**

If you are interested in taking vocational training, what training would you be looking for?

| | | |
|----------------------------------|----|---------|
| Business administration | 5 | (7.5%) |
| Clerical/Secretarial | 3 | (4.5%) |
| Information Technology/Computing | 32 | (47.8%) |
| Professional/Managerial | 10 | (14.9%) |
| Engineering | 1 | (1.5%) |
| Construction | 3 | (4.5%) |
| Skilled/Craft related | 15 | (22.4%) |
| Catering/hospitality | 3 | (4.5%) |
| Retail | 2 | (3.0%) |
| Other | 10 | (14.9%) |

Question Number: 15 **NUMBER OF RESPONDENTS TO QUESTION: 166**

If vocational training was made available locally would you attend in the?

| | | |
|--------------------------|-----|---------|
| Morning | 11 | (6.6%) |
| Afternoon | 3 | (1.8%) |
| Evening | 52 | (31.3%) |
| Would not be of interest | 100 | (60.2%) |

Question Number: 16 **NUMBER OF RESPONDENTS TO QUESTION: 121**

In relation to educational facilities, does Plumley Toft and Bexton need any of the following?

| | | |
|-------------------------------------|----|---------|
| Nursery School | 25 | (20.7%) |
| Playgroup | 28 | (23.1%) |
| More registered childminders | 11 | (9.1%) |
| Full day care (attached to College) | 2 | (1.7%) |
| After school clubs | 33 | (27.3%) |
| Holiday play scheme | 44 | (36.4%) |
| Adult education evening classes | 66 | (54.5%) |
| Other | 6 | (5.0%) |

Question Number: 17 **NUMBER OF RESPONDENTS TO QUESTION: 220**

Does any member of your household have any disabilities?

| | | |
|-----|-----|---------|
| Yes | 30 | (13.6%) |
| No | 190 | (86.4%) |

Question Number: 18 **NUMBER OF RESPONDENTS TO QUESTION: 240**

How many cars, motorcycles and bicycles does your household have?

| | |
|-------------|-----|
| Cars | 271 |
| Motorcycles | 12 |
| Bicycles | 162 |

Please list up to 8 journeys that members of your household make most frequently:

Purpose of journey:

| | | |
|--------------|------------|---------|
| Health | 39 | (6.5%) |
| Leisure | 158 | (26.5%) |
| School | 51 | (8.6%) |
| Shopping | 182 | (30.5%) |
| Work | 157 | (26.3%) |
| Other | 9 | (1.5%) |
| TOTAL | 596 | |

| Destination: | | | Work | Shopping | Leisure | Health | School | Other |
|----------------|------------|---------|------|----------|---------|--------|--------|-------|
| Alderley Edge | 6 | (1.0%) | 3 | 0 | 2 | 0 | 1 | 0 |
| Altrincham | 29 | (4.7%) | 8 | 6 | 10 | 0 | 3 | 1 |
| Chester | 9 | (1.5%) | 2 | 3 | 3 | 0 | 0 | 0 |
| Crewe | 6 | (1.0%) | 5 | 1 | 0 | 0 | 0 | 0 |
| Handforth Dean | 9 | (1.5%) | 2 | 5 | 0 | 1 | 0 | 0 |
| Hartford | 7 | (1.1%) | 1 | 0 | 2 | 0 | 4 | 0 |
| Holmes Chapel | 16 | (2.6%) | 0 | 0 | 2 | 0 | 13 | 0 |
| Knutsford | 143 | (23.4%) | 19 | 58 | 34 | 19 | 7 | 4 |
| Liverpool | 7 | (1.1%) | 3 | 0 | 3 | 0 | 1 | 0 |
| Macclesfield | 21 | (3.4%) | 6 | 1 | 3 | 7 | 2 | 1 |
| Manchester | 56 | (9.2%) | 34 | 7 | 10 | 1 | 2 | 0 |
| Northwich | 139 | (22.7%) | 17 | 86 | 18 | 7 | 5 | 1 |
| Peover | 17 | (2.8%) | 2 | 1 | 6 | 0 | 6 | 1 |
| Plumley | 14 | (2.3%) | 2 | 5 | 7 | 0 | 0 | 0 |
| Sale | 7 | (1.1%) | 5 | 0 | 2 | 0 | 0 | 0 |
| Stockport | 5 | (0.8%) | 3 | 1 | 1 | 0 | 0 | 0 |
| Warrington | 7 | (1.1%) | 5 | 1 | 1 | 0 | 0 | 0 |
| Wilmslow | 8 | (1.3%) | 3 | 0 | 4 | 0 | 0 | 1 |
| Other | 106 | (17.3%) | 36 | 7 | 49 | 4 | 6 | 1 |
| TOTAL | 612 | | | | | | | |

| Form of transport: | | | Work | Shopping | Leisure | Health | School | Other |
|--------------------|------------|---------|------|----------|---------|--------|--------|-------|
| Car/Motorcycle | 503 | (79.2%) | 141 | 160 | 122 | 29 | 31 | 9 |
| Car Share | 14 | (2.2%) | 2 | 5 | 5 | 1 | 1 | 0 |
| Community Bus | 24 | (3.8%) | 1 | 2 | 0 | 0 | 19 | 0 |
| Taxi | 7 | (1.1%) | 1 | 1 | 2 | 2 | 0 | 0 |
| Train | 60 | (9.4%) | 11 | 19 | 21 | 4 | 2 | 0 |
| Bicycle | 17 | (2.7%) | 5 | 0 | 12 | 0 | 0 | 0 |
| Walk | 10 | (1.6%) | 0 | 2 | 5 | 0 | 2 | 0 |
| TOTAL | 635 | | | | | | | |

Question Number: 19 **NUMBER OF RESPONDENTS TO QUESTION: 285**

Do you experience transport difficulties in getting out of Plumley Toft or Bexton to other places?

| | | |
|--------------|-----|---------|
| Often | 19 | (6.7%) |
| Occasionally | 68 | (23.9%) |
| Never | 198 | (69.5%) |

Question Number: 20 **NUMBER OF RESPONDENTS TO QUESTION: 27**

Provide details of any journeys you would like to make but are currently unable to make because of lack of service, cost, no access to a car, etc:

Purpose of journey:

| | | |
|--------------|-----------|---------|
| Health | 9 | (33.3%) |
| Leisure | 6 | (22.2%) |
| School | 1 | (3.7%) |
| Shopping | 6 | (22.2%) |
| Work | 3 | (11.1%) |
| Other | 2 | (7.4%) |
| TOTAL | 27 | |

| Destination: | | Work | Shopping | Leisure | Health | School | Other |
|---------------|-----------|------|----------|---------|--------|--------|-------|
| Alderley Edge | 2 (7.4%) | 0 | 0 | 1 | 0 | 1 | 0 |
| Altrincham | 0 (0.0%) | 0 | 0 | 0 | 0 | 0 | 0 |
| Holmes Chapel | 1 (3.7%) | 0 | 0 | 0 | 0 | 0 | 1 |
| Knutsford | 9 (33.3%) | 0 | 3 | 2 | 4 | 0 | 0 |
| Macclesfield | 6 (22.2%) | 1 | 0 | 1 | 4 | 0 | 0 |
| Manchester | 3 (11.1%) | 1 | 1 | 0 | 1 | 0 | 0 |
| Northwich | 3 (11.1%) | 0 | 1 | 1 | 0 | 0 | 1 |
| Plumley | 1 (3.7%) | 0 | 1 | 0 | 0 | 0 | 0 |
| Other | 2 (7.4%) | 1 | 0 | 1 | 0 | 0 | 0 |
| TOTAL | 27 | | | | | | |

Why are you unable to make this journey?

| | | Work | Shopping | Leisure | Health | School | Other |
|---------------------|------------|------|----------|---------|--------|--------|-------|
| No Car | 6 (15.0%) | 0 | 0 | 0 | 5 | 0 | 0 |
| No Bus | 14 (35.0%) | 1 | 3 | 3 | 6 | 0 | 1 |
| No Train | 6 (15.0%) | 0 | 0 | 0 | 4 | 1 | 1 |
| Cost | 0 (0.0%) | 0 | 0 | 0 | 0 | 0 | 0 |
| Lack of Information | 1 (2.5%) | 0 | 0 | 1 | 0 | 0 | 0 |
| Disability | 5 (12.5%) | 0 | 0 | 1 | 4 | 0 | 0 |
| Other | 8 (20.0%) | 2 | 3 | 2 | 1 | 0 | 0 |
| TOTAL | 40 | | | | | | |

Question Number: 21 **NUMBER OF RESPONDENTS TO QUESTION: 204**

Would you be prepared to take part in a scheme to share private vehicles for?

| | Often | Occasionally | Never |
|--|----------|--------------|-------------|
| Shopping | 4 (2.0%) | 21 (10.3%) | 146 (71.6%) |
| School | 8 (3.9%) | 13 (6.4%) | 122 (59.8%) |
| Social or leisure | 3 (1.5%) | 42 (20.6%) | 119 (58.3%) |
| Work | 5 (2.5%) | 10 (4.9%) | 132 (64.7%) |
| Medical appointments/hospital visiting | 3 (1.5%) | 36 (17.6%) | 127 (62.3%) |

Question Number: 22 **NUMBER OF RESPONDENTS TO QUESTION: 233**

Are you aware of the Taxi Rider scheme being operated by Amber Cars in our Parish?

| | | |
|-----|-----|---------|
| Yes | 167 | (71.7%) |
| No | 66 | (28.3%) |

Question Number: 23 **NUMBER OF RESPONDENTS TO QUESTION: 262**

Would you like to see any improvements in the train service with regard to?

| | | |
|------------------------------------|----|---------|
| Service | 72 | (27.5%) |
| Timetable | 63 | (24.0%) |
| Cost | 61 | (23.3%) |
| Reliability | 91 | (34.7%) |
| Access for those with disabilities | 25 | (9.5%) |
| Access to car park | 10 | (3.8%) |
| Security of car park | 40 | (15.3%) |
| No opinion | 95 | (36.3%) |

Question Number: 24 **NUMBER OF RESPONDENTS TO QUESTION: 35**

Are there special problems in Plumley with Toft and Bexton for people with disabilities or parents with pushchairs?

| | | |
|---------------------------------------|----|---------|
| Access to premises | 6 | (17.1%) |
| Unsuitable or lack of pavements | 32 | (91.4%) |
| Other: | | |
| Not safe for wheelchairs | 1 | (2.9%) |
| Cars parked on pavements | 1 | (2.9%) |
| Station Access | 1 | (2.9%) |
| No secure place to store walking aids | 1 | (2.9%) |

Question Number: 25 **NUMBER OF RESPONDENTS TO QUESTION: 218**

Please indicate whether the standard of pavements in your community is:

| | | |
|------------|-----|---------|
| Good | 14 | (6.4%) |
| Reasonable | 104 | (47.7%) |
| Poor | 85 | (39.0%) |
| No opinion | 15 | (6.9%) |

Question Number: 26 **NUMBER OF RESPONDENTS TO QUESTION: 263**

Would you support the following speed control measures in Plumley with Toft and Bexton?

| | | |
|-------------------------------|-----|---------|
| Extension of the speed limit | 72 | (27.4%) |
| Introduce a lower speed limit | 205 | (77.9%) |
| Traffic calming | 132 | (50.2%) |
| Pedestrian priority crossing | 131 | (49.8%) |
| Children crossing signs | 124 | (47.1%) |
| More road warning signs | 84 | (31.9%) |
| Other | 27 | (10.3%) |

Please give details of where you would like these measures to be implemented:

| | | |
|--|----|---------|
| Plumley Moor Road | 45 | (17.1%) |
| Between Pinfold Lane and Plumley Station | 1 | (0.4%) |
| Crossing at Village Shop | 11 | (4.2%) |
| Railway Bridge | 3 | (1.2%) |
| Bend at Plumley Methodist Chapel | 6 | (2.3%) |
| Pinfold Lane crossroads | 2 | (0.8%) |
| Seven Sisters Lane (both end junctions) | 2 | (0.8%) |
| Junction of Gough's Lane & A50 | 1 | (0.4%) |
| A50 Toft | 1 | (0.4%) |
| Trouthall Lane | 3 | (1.2%) |
| Ascol Drive | 1 | (0.4%) |

Question Number: 27 **NUMBER OF RESPONDENTS TO QUESTION: 208**
 Do you think there are any major 'danger-spots' on the roads in Plumley, Toft and Bexton?

| | | |
|------------|-----|---------|
| Yes | 178 | (85.6%) |
| No | 15 | (7.2%) |
| No opinion | 15 | (7.2%) |

| Where? | | Path Narrow | Fast Traffic | Road Narrow | Phasing of lights | HGV's | Poor Sight Line |
|---|------------|----------------|-----------------|----------------|----------------------|-------|-----------------------|
| Plumley Moor Road | 26 (12.5%) | 4 | 9 | 2 | 0 | 1 | 1 |
| Trouthall Lane | 2 (1.0%) | 0 | 0 | 1 | 0 | 0 | 0 |
| Crossing at Village Shop | 19 (9.1%) | 0 | 4 | 0 | 0 | 0 | 5 |
| Railway Bridge | 37 (17.8%) | 10 | 7 | 2 | 0 | 0 | 2 |
| Bend at Plumley Methodist Chapel | 40 (19.2%) | 0 | 4 | 0 | 0 | 0 | 14 |
| Exit from Malt Kiln | 3 (1.5%) | 0 | 0 | 0 | 0 | 0 | 2 |
| Riding Stables | 2 (1.0%) | 1 | 0 | 0 | 0 | 0 | 0 |
| Traffic Lights at A556 | 18 (8.7%) | 0 | 1 | 5 | 4 | 0 | 2 |
| Seven Sisters Lane (both end junctions) | 6 (2.9%) | 0 | 3 | 0 | 0 | 0 | 2 |
| Pinfold Lane crossroads | 19 (9.1%) | 1 | 3 | 0 | 0 | 0 | 6 |
| Outside Plumley Village Hall | 2 (1.0%) | 0 | 0 | 1 | 0 | 0 | 0 |
| Junction's of Gough's/ Beggarmans Lane & A50 | 1 (0.5%) | 0 | 0 | 0 | 0 | 0 | 0 |
| A50 Toft | 4 (2.0%) | 0 | 2 | 0 | 0 | 0 | 1 |
| Bend at Plumley riding stables | 4 (2.0%) | 0 | 2 | 1 | 0 | 0 | 1 |
| Middlewich Road | 5 (2.4%) | 0 | 1 | 1 | 0 | 0 | 2 |
| Corner at Henshaw Green Farm | 1 (0.5%) | 0 | 0 | 0 | 0 | 0 | 0 |
| Junction at Ascol Drive | 2 (1.0%) | 0 | 1 | 0 | 0 | 0 | 0 |
| A556 | 4 (2.0%) | 0 | 2 | 0 | 0 | 1 | 0 |
| Exit from Toft Church | 1 (0.5%) | 0 | 0 | 0 | 0 | 0 | 0 |

| Why? | | |
|--------------------------------|----|---------|
| Path too narrow or no footpath | 16 | (7.7%) |
| Traffic too fast | 39 | (18.8%) |
| Road too narrow | 13 | (6.3%) |
| Phasing of traffic lights | 4 | (1.9%) |
| HGV's | 2 | (1.0%) |
| Poor sight lines/blind corner | 38 | (18.3%) |

Question Number: 28 **NUMBER OF RESPONDENTS TO QUESTION: 245**
 In relation to paths and street lights, would you like to see any of the following in Plumley, Toft and Bexton?

| | | |
|--|----|---------|
| Cycle paths | 63 | (25.7%) |
| More footpaths | 80 | (32.7%) |
| More street lights | 63 | (25.7%) |
| More environmentally sensitive street lights | 74 | (30.2%) |
| More pavements | 77 | (31.4%) |
| Pelican crossings | 66 | (26.9%) |
| Dropped kerbs | 17 | (6.9%) |
| None of the above | 42 | (17.1%) |

Where would you like to see these improvements?

| | | |
|--------------|----|---------|
| Malt Kiln | 10 | (4.1%) |
| Plumley Moor | 58 | (23.7%) |
| Yew Tree | 16 | (6.5%) |
| Moorcroft | 12 | (4.9%) |
| Trouthall | 16 | (6.5%) |
| A50 Toft | 5 | (2.0%) |
| A556 | 2 | (0.8%) |

Question Number: 29**NUMBER OF RESPONDENTS TO QUESTION: 309**

How important is the quality of the countryside around Plumley, Toft and Bexton to you?

| | | |
|--------------------|-----|---------|
| Very important | 272 | (88.0%) |
| Important | 34 | (11.0%) |
| Not very important | 1 | (0.3%) |
| No opinion | 2 | (0.6%) |

Question Number: 30**NUMBER OF RESPONDENTS TO QUESTION: 52**

Do you have any environmental concerns?

| | | |
|---|---|---------|
| Too many lights at night | 2 | (3.8%) |
| Cars travelling too fast | 1 | (1.9%) |
| Aircraft noise | 7 | (13.5%) |
| Motorway & road noise | 4 | (7.7%) |
| Proposed motorway extension | 2 | (3.8%) |
| Fly Tipping | 2 | (3.8%) |
| Proposed incinerator | 4 | (7.7%) |
| Buildings erected without planning permission | 1 | (1.9%) |
| Loss of green belt | 4 | (7.7%) |
| Magpies and Rabbits | 1 | (1.9%) |
| Litter | 1 | (1.9%) |
| Removal of trees | 1 | (1.9%) |
| Conversion of farm buildings | 1 | (1.9%) |
| Telecommunication masts | 2 | (3.8%) |
| Plumley Nature Reserve | 1 | (1.9%) |
| Gas Plant at Byley | 3 | (5.8%) |
| Unkempt grass, hedges and trees | 3 | (5.8%) |
| Dog dirt on pavements | 1 | (1.9%) |
| Too many road signs | 1 | (1.9%) |
| HGV's on minor roads | 1 | (1.9%) |
| Environmental Pollution (Peover Eye) | 4 | (7.7%) |
| Use of herbicides & pesticides | 1 | (1.9%) |
| Off road bikes | 3 | (5.8%) |
| Flooding of Plumley Moor | 1 | (1.9%) |

Question Number: 31**NUMBER OF RESPONDENTS TO QUESTION: 219**

How important are the following features of the surrounding countryside to you?

| | very important | important | not very special | no opinion |
|-------------------------------------|----------------|------------|------------------|------------|
| Woods | 166 (75.8%) | 44 (20.1%) | 0 (0.0%) | 1 (0.5%) |
| Hedges | 166 (75.8%) | 39 (17.8%) | 3 (1.4%) | 1 (0.5%) |
| Ditches/drainage | 140 (63.9%) | 51 (23.3%) | 7 (3.2%) | 7 (3.2%) |
| Meadows and green fields | 167 (76.3%) | 40 (18.3%) | 0 (0.0%) | 1 (0.5%) |
| Modern farm buildings | 38 (17.4%) | 34 (15.5%) | 88 (40.2%) | 33 (15.1%) |
| Traditional farm buildings | 118 (53.9%) | 59 (26.9%) | 10 (4.6%) | 12 (5.5%) |
| Ponds | 122 (55.7%) | 61 (27.9%) | 10 (4.6%) | 7 (3.2%) |
| Public footpaths (Not pavements) | 137 (62.6%) | 54 (24.7%) | 12 (5.5%) | 4 (1.8%) |

Question Number: 32 **NUMBER OF RESPONDENTS TO QUESTION: 201**

What do you think could be done to improve the environment of Plumley with Toft and Bexton?

| | very important | worth doing | not necessary | don't know |
|---|----------------|-------------|---------------|------------|
| Plant more trees | 58 (28.9%) | 53 (26.4%) | 44 (21.9%) | 5 (2.5%) |
| Look after woodlands | 130 (64.7%) | 54 (26.9%) | 5 (2.5%) | 0 (0.0%) |
| Plant or preserve single trees in special areas | 73 (36.3%) | 69 (34.3%) | 27 (13.4%) | 0 (0.0%) |
| Plant new orchards | 38 (18.9%) | 60 (29.9%) | 58 (28.9%) | 5 (2.5%) |
| Create/preserve ponds and waterways | 89 (44.3%) | 68 (33.8%) | 16 (8.0%) | 1 (0.5%) |
| Maintain hedges | 153 (76.1%) | 40 (19.9%) | 3 (1.5%) | 0 (0.0%) |
| Plant more hedges and trees | 67 (33.3%) | 56 (27.9%) | 44 (21.9%) | 2 (1.0%) |
| Other | 21 (10.4%) | 0 (0.0%) | 2 (1.0%) | 4 (2.0%) |

Question Number: 33 **NUMBER OF RESPONDENTS TO QUESTION: 268**

In relation to local footpaths and bridleways, can you answer the following questions?

| | Yes | No | No opinion |
|--|-------------|-------------|------------|
| Do you know where the local paths are? | 205 (76.5%) | 49 (18.3%) | 5 (1.9%) |
| Can you use them without difficulty? | 138 (51.5%) | 56 (20.9%) | 12 (4.5%) |
| Are they well signposted? | 90 (33.6%) | 100 (37.3%) | 18 (6.7%) |
| Would you be willing to maintain them? | 57 (21.3%) | 111 (41.4%) | 31 (11.6%) |

Question Number: 34 **NUMBER OF RESPONDENTS TO QUESTION: 158**

If you experienced difficulties when using local footpaths and bridleways, which if any, of the following difficulties did you find?

| | |
|---------------------------|------------|
| Farm animals | 23 (14.6%) |
| High stiles | 30 (19.0%) |
| Locked gates | 18 (11.4%) |
| Barbed wire | 15 (9.5%) |
| Mud/water | 54 (34.2%) |
| Crops across path | 29 (18.4%) |
| Other users | 10 (6.3%) |
| Bushes/nettles | 66 (41.8%) |
| No signposts | 57 (36.1%) |
| Other | 17 (10.8%) |
| No difficulty experienced | 41 (25.9%) |

Question Number: 35 **NUMBER OF RESPONDENTS TO QUESTION: 218**

What type(s) of housing development would be acceptable in Plumley Toft and Bexton?

| | |
|------------------------------------|-------------|
| Detached houses | 36 (16.5%) |
| Small group(s) of less than 10 | 61 (28.0%) |
| Carefully designed larger group(s) | 8 (3.7%) |
| Conversion of redundant buildings | 119 (54.6%) |
| Affordable housing | 80 (36.7%) |
| Other | 8 (3.7%) |
| None | 56 (25.7%) |

Question Number: 36 **NUMBER OF RESPONDENTS TO QUESTION: 220**

Is there a need for a 'good neighbour' type scheme in Plumley with Toft and Bexton?

| | |
|------------|-------------|
| Yes | 148 (67.3%) |
| No | 17 (7.7%) |
| Don't know | 55 (25.0%) |

Question Number: 37 **NUMBER OF RESPONDENTS TO QUESTION: 297**

Do you regard the police coverage of Plumley Toft and Bexton to be?

| | | |
|------------|-----|---------|
| Good | 13 | (4.4%) |
| Reasonable | 78 | (26.3%) |
| Poor | 158 | (53.2%) |
| No opinion | 48 | (16.2%) |

Question Number: 38 **NUMBER OF RESPONDENTS TO QUESTION: 214**

Which, if any, of the following crimes and anti-social behaviour concern you in Plumley Toft and Bexton?

| | | |
|-----------------------|-----|---------|
| Theft | 133 | (62.1%) |
| Mugging | 23 | (10.7%) |
| Vandalism | 95 | (44.4%) |
| Drunkenness | 21 | (9.8%) |
| Inconsiderate parking | 75 | (35.0%) |
| Other | 31 | (14.5%) |
| Not concerned | 32 | (15.0%) |

Question Number: 39 **NUMBER OF RESPONDENTS TO QUESTION: 194**

Do you think that any of the following measures are needed?

| | | |
|---|-----|---------|
| A greater police presence | 112 | (57.7%) |
| Better consultation between police and local people | 76 | (39.2%) |
| A neighbourhood watch | 66 | (34.0%) |
| Improved street lighting | 59 | (30.4%) |
| More drug/drink education/prevention | 33 | (17.0%) |
| More activities for young people | 92 | (47.4%) |
| CCTV | 10 | (5.2%) |
| Other | 3 | (1.5%) |

Question Number: 40 **NUMBER OF RESPONDENTS TO QUESTION: 269**

Are you aware of the following recreational facilities in Plumley?

| | | |
|----------------------------------|-----|---------|
| Toddlers play area Moorcroft | 141 | (52.4%) |
| Bowling green at Golden Pheasant | 257 | (95.5%) |
| Tennis courts | 253 | (94.1%) |

Question Number: 41 **NUMBER OF RESPONDENTS TO QUESTION: 266**

What are your views on local social facilities for?

| | good | reasonable | poor | no opinion |
|--------------------|------------|-------------|-------------|------------|
| Children up to 16 | 8 (3.0%) | 30 (11.3%) | 134 (50.4%) | 58 (21.8%) |
| Young people 17-25 | 5 (1.9%) | 21 (7.9%) | 131 (49.2%) | 59 (22.2%) |
| People 26-60 | 33 (12.4%) | 120 (45.1%) | 29 (10.9%) | 48 (18.0%) |
| People over 60 | 59 (22.2%) | 98 (36.8%) | 17 (6.4%) | 47 (17.7%) |

Question Number: 42 **NUMBER OF RESPONDENTS TO QUESTION: 52**

What other leisure, sports and youth facilities would you use if they were available?

| | | |
|---|---|---------|
| Dance Classes | 2 | (3.9%) |
| Summer Club for children (with special needs) | 3 | (5.8%) |
| Village Cricket | 2 | (3.9%) |
| Youth Football | 2 | (3.9%) |
| Youth Golf Club | 1 | (1.9%) |
| Youth Centre/Club | 8 | (15.4%) |
| Children's (adventure) Playground | 4 | (7.7%) |
| Nursery School | 1 | (1.9%) |
| Duck Pond | 1 | (1.9%) |
| Swimming Pool | 7 | (13.5%) |
| Playing field | 6 | (11.5%) |
| Brownies, Guides, Cubs, Scouts | 2 | (3.9%) |
| Walking | 1 | (1.9%) |
| Adult education classes | 2 | (3.9%) |
| Multi sport facility | 4 | (7.7%) |
| Badminton Club | 1 | (1.9%) |
| Snooker at Village Hall | 1 | (1.9%) |
| Improved tennis facility | 1 | (1.9%) |
| Drama Group | 1 | (1.9%) |
| Running Club | 1 | (1.9%) |
| Squash Club | 1 | (1.9%) |

Question Number: 43 **NUMBER OF RESPONDENTS TO QUESTION: 230**

Did you know that there is a Plumley Celtic Football club?

| | | |
|-----|-----|---------|
| Yes | 139 | (60.4%) |
| No | 91 | (39.6%) |

Question Number: 44 **NUMBER OF RESPONDENTS TO QUESTION: 213**

Do you feel we should try to obtain a village playing field?

| | | |
|-----|-----|---------|
| Yes | 154 | (72.3%) |
| No | 59 | (27.7%) |

Question Number: 45 **NUMBER OF RESPONDENTS TO QUESTION: 137**

Which new clubs/activities would you attend in Plumley, Toft and Bexton if they were provided?

| | | |
|----------------------------|----|---------|
| Senior Citizens Group | 10 | (7.3%) |
| Gardening Club | 52 | (38.0%) |
| Rambling Club | 42 | (30.7%) |
| Art Club | 29 | (21.2%) |
| Young people's drama group | 24 | (17.5%) |
| Creative arts for children | 28 | (20.4%) |
| Dancing | 41 | (29.9%) |
| Tennis Club | 11 | (8.0%) |

Others:

| | | |
|-------------------------------------|---|--------|
| Brownies, Guides, Cubs, Scouts | 1 | (0.7%) |
| Under 16's Sports Club | 2 | (1.5%) |
| Tennis Club | 4 | (2.9%) |
| Badminton Club | 1 | (0.7%) |
| Football Club | 3 | (2.2%) |
| Cricket Club | 2 | (1.5%) |
| Yoga Fitness Centre/Pilates/Fitness | 4 | (2.9%) |
| Keep Fit | 1 | (0.7%) |
| Slimming Club | 1 | (0.7%) |
| Line Dancing | 1 | (0.7%) |
| Salsa Dancing | 1 | (0.7%) |
| Whist Drives | 1 | (0.7%) |
| Bridge Club | 1 | (0.7%) |
| Cinema | 1 | (0.7%) |
| Photographic Club | 1 | (0.7%) |
| Computer Club | 1 | (0.7%) |
| Business Club | 1 | (0.7%) |
| Wine Club | 1 | (0.7%) |
| Drinking Club | 1 | (0.7%) |

Question Number: 46 **NUMBER OF RESPONDENTS TO QUESTION: 23**

Would you be prepared to help organise and run any of the following?

| | | |
|----------------------------|---|---------|
| Senior Citizens Group | 1 | (4.3%) |
| Gardening Club | 8 | (34.8%) |
| Rambling Club | 7 | (30.4%) |
| Art Club | 0 | (0.0%) |
| Young people's drama group | 6 | (26.1%) |
| Creative arts for children | 6 | (26.1%) |
| Dancing | 6 | (26.1%) |
| Tennis Club | 1 | (4.3%) |

Question Number: 47 **NUMBER OF RESPONDENTS TO QUESTION: 279**

How many times a month do you use the following venues?

| | More than 10 | between 6 and 10 | between 1 and 5 | less frequently | never |
|--------------------------|--------------|------------------|-----------------|-----------------|-------------|
| Village Hall Plumley | 1 (0.4%) | 4 (1.4%) | 71(25.4%) | 132 (47.3%) | 59 (21.1%) |
| Methodist Chapel Plumley | 4 (1.4%) | 3 (1.1%) | 18 (6.5%) | 44 (15.8%) | 152 (54.5%) |
| Church Hall at Toft | 0 (0.0%) | 0 (0.0%) | 7 (2.5%) | 19 (6.8%) | 197 (70.6%) |

Question Number: 48 **NUMBER OF RESPONDENTS TO QUESTION: 278**

Where do you usually get information about events taking place in Plumley?

| | | |
|------------------------------|-----|---------|
| Village hall NB | 84 | (30.2%) |
| Plumley Newsletter | 246 | (88.5%) |
| Knutsford Guardian | 110 | (39.6%) |
| Parish Notice Boards | 53 | (19.1%) |
| Plumley Village Website | 5 | (1.8%) |
| Church magazines/newsletters | 77 | (27.7%) |
| Other: | 31 | (11.2%) |
| Village Shop | 5 | (1.8%) |
| Word of mouth | 12 | (4.3%) |

Question Number: 49 **NUMBER OF RESPONDENTS TO QUESTION: 216**

Have you ever attended a meeting of the Parish Council?

| | | |
|-----|-----|---------|
| Yes | 81 | (37.5%) |
| No | 135 | (62.5%) |

Question Number: 50 **NUMBER OF RESPONDENTS TO QUESTION: 105**

Did you feel that the issues discussed reflected local concerns?

| | | |
|------------|----|---------|
| Yes | 57 | (54.3%) |
| No | 19 | (18.1%) |
| No opinion | 29 | (27.6%) |

Question Number: 51 **NUMBER OF RESPONDENTS TO QUESTION: 193**

How well does the local council publicise its decisions and activities?

| | | |
|-----------------|----|---------|
| Very well | 14 | (7.3%) |
| Reasonably well | 77 | (39.9%) |
| Badly | 57 | (29.5%) |
| No opinion | 45 | (23.3%) |

Question Number: 52 **NUMBER OF RESPONDENTS TO QUESTION: 79**

Do you think there is a need to provide any of the following services locally?

| | | |
|--|----|---------|
| Counselling services | 13 | (16.5%) |
| Chiropody | 62 | (78.5%) |
| Physiotherapy | 44 | (55.7%) |
| Optician | 25 | (31.6%) |
| Other: | 8 | (10.1%) |
| Dentist | 2 | (2.5%) |
| Doctor | 2 | (2.5%) |
| Cover for helpers (especially at weekends) | 1 | (1.3%) |
| Health Centre for young people | 1 | (1.3%) |

Question Number: 53 **NUMBER OF RESPONDENTS TO QUESTION: 294**

There are three places of worship. Do you attend any services at these places of worship?

| | | |
|-----|-----|---------|
| Yes | 105 | (35.7%) |
| No | 189 | (64.3%) |

Question Number: 54 **NUMBER OF RESPONDENTS TO QUESTION: 115**

If you do not attend any of these places of worship is this because you have

| | | |
|--------------------------------------|----|---------|
| Problems getting there | 2 | (1.7%) |
| Another denomination | 42 | (36.5%) |
| Attend elsewhere | 25 | (21.7%) |
| Other: | 48 | (41.7%) |
| No Interest | 15 | (13.1%) |
| Church un-welcoming | 2 | (1.7%) |
| Just moved to area | 1 | (0.9%) |
| Time of day is inconvenient | 1 | (0.9%) |
| Poor child facilities | 1 | (0.9%) |
| Lack of acceptance of small children | 1 | (0.9%) |

Question Number: 55 **NUMBER OF RESPONDENTS TO QUESTION: 290**

How often do you use the following shops and services?

| | daily | weekly | monthly | less frequently | never |
|---------------------------|------------|-------------|------------|-----------------|-------------|
| Plumley Village Stores | 45 (15.5%) | 107 (36.9%) | 48 (16.6%) | 50 (17.2%) | 23 (7.9%) |
| Mobile library | 1 (0.3%) | 6 (2.1%) | 7 (2.4%) | 13 (4.5%) | 204 (70.3%) |
| Golden Pheasant | 5 (1.7%) | 26 (9.0%) | 47 (16.2%) | 112 (38.6%) | 54 (18.6%) |
| Smoker Inn | 0 (0.0%) | 9 (3.1%) | 30 (10.3%) | 113 (39.0%) | 93 (32.1%) |
| Hidden Nursery | 0 (0.0%) | 16 (5.5%) | 61 (21.0%) | 124 (42.8%) | 57 (19.7%) |
| Ascol Drive Nursery | 0 (0.0%) | 1 (0.3%) | 4 (1.4%) | 48 (16.6%) | 184 (63.4%) |
| Heathfield Nursery | 0 (0.0%) | 0 (0.0%) | 1 (0.3%) | 30 (10.3%) | 206 (71.0%) |
| Peover Golf Club | 2 (0.7%) | 3 (1.0%) | 5 (1.7%) | 48 (16.6%) | 181 (62.4%) |
| Holly Tree Riding Stables | 1 (0.3%) | 1 (0.3%) | 0 (0.0%) | 9 (3.1%) | 226 (77.9%) |

Question Number: 56 **NUMBER OF RESPONDENTS TO QUESTION: 216**

If you usually shop in Plumley Village Stores is it because?

| | | |
|--|-----|---------|
| The local shops give good value | 20 | (9.3%) |
| You like to support local shops | 149 | (69.0%) |
| You like the social contact | 48 | (22.2%) |
| It is convenient | 158 | (73.1%) |
| You don't have transport to go elsewhere | 11 | (5.1%) |
| You need 'last minute' items | 112 | (51.9%) |
| Other: | 10 | (4.6%) |
| Order of magazines | 1 | (0.5%) |

Question Number: 57 **NUMBER OF RESPONDENTS TO QUESTION: 229**

If you use the local Post Office, please say what for?

| | | |
|---------------------|-----|---------|
| Postal services | 210 | (91.7%) |
| Pensions/Allowances | 34 | (14.8%) |
| Banking | 33 | (14.4%) |
| Travel Services | 27 | (11.8%) |
| Bill payments | 50 | (21.8%) |
| Investments | 9 | (3.9%) |
| Insurance | 15 | (6.6%) |

Question Number: 58 **NUMBER OF RESPONDENTS TO QUESTION: 246**

How do you rate Plumley Village Stores for?

| | Good | Reasonable | Poor | No Opinion |
|-------------------|-------------|-------------|-------------|------------|
| Product range | 30 (35.37%) | 41 (52.03%) | 2 (3.25%) | 2 (4.47%) |
| Services provided | 50 (58.94%) | 20 (26.83%) | 1 (2.85%) | 1 (4.88%) |
| Opening Hours | 22 (36.99%) | 32 (35.37%) | 17 (17.07%) | 1 (3.66%) |
| Service | 55 (64.23%) | 15 (22.36%) | 1 (1.22%) | 1 (4.47%) |

Other comments:

| | | |
|-----------------------------|---|--------|
| Need more attractive offers | 1 | (0.4%) |
| Sunday morning opening | 1 | (0.4%) |

BUSINESS SECTION**Question Number: 59** **NUMBER OF RESPONDENTS TO QUESTION: 23**

What Type of Business are you?

| | | |
|---------------------------------|----|---------|
| Home worker | 1 | (4.3%) |
| Business operating from home | 15 | (65.2%) |
| Business with business premises | 7 | (30.4%) |

Question Number: 65 **NUMBER OF RESPONDENTS TO QUESTION: 23**

Have you made use of any of the rural grant facilities?

| | | | |
|----------------|---------------------|----|---------|
| | Yes | 3 | (13.0%) |
| | No | 20 | (87.0%) |
| If yes, which? | | | |
| | Single farm payment | 1 | (4.3%) |
| | ELS | 1 | (4.3%) |
| | Rural recovery | 1 | (4.3%) |

Question Number: 66 **NUMBER OF RESPONDENTS TO QUESTION: 21**

Do you market your business locally?

| | | | |
|---------|-----------------------------|----|---------|
| | Yes | 8 | (38.1%) |
| | No | 13 | (61.9%) |
| How? | | | |
| | Telemarketing | 1 | (4.8%) |
| | Internet and e commerce | 4 | (19.0%) |
| | Local Newspapers | 5 | (23.8%) |
| | Local Advertising | 4 | (19.0%) |
| Others: | | 3 | (14.3%) |
| | Mail shots | 1 | (4.8%) |
| | Programmes for local events | 1 | (4.8%) |
| | Word of mouth | 1 | (4.8%) |

Question Number: 67 **NUMBER OF RESPONDENTS TO QUESTION: 23**

Do you use the strength of Plumley to market your business?

| | | | |
|--|-----|----|---------|
| | Yes | 4 | (17.4%) |
| | No | 19 | (82.6%) |

Question Number: 68 **NUMBER OF RESPONDENTS TO QUESTION: 8**

How could Plumley with Toft & Bexton help you to expand?

| | | | |
|--|--|---|---------|
| | Promote support for local businesses | 3 | (13.0%) |
| | Loyalty scheme | 1 | (4.3%) |
| | Publicity of range of businesses in area | 1 | (4.3%) |
| | Do more of what you do now | 1 | (4.3%) |
| | A better return on agricultural produce | 1 | (4.3%) |
| | Do not think it could | 1 | (4.3%) |